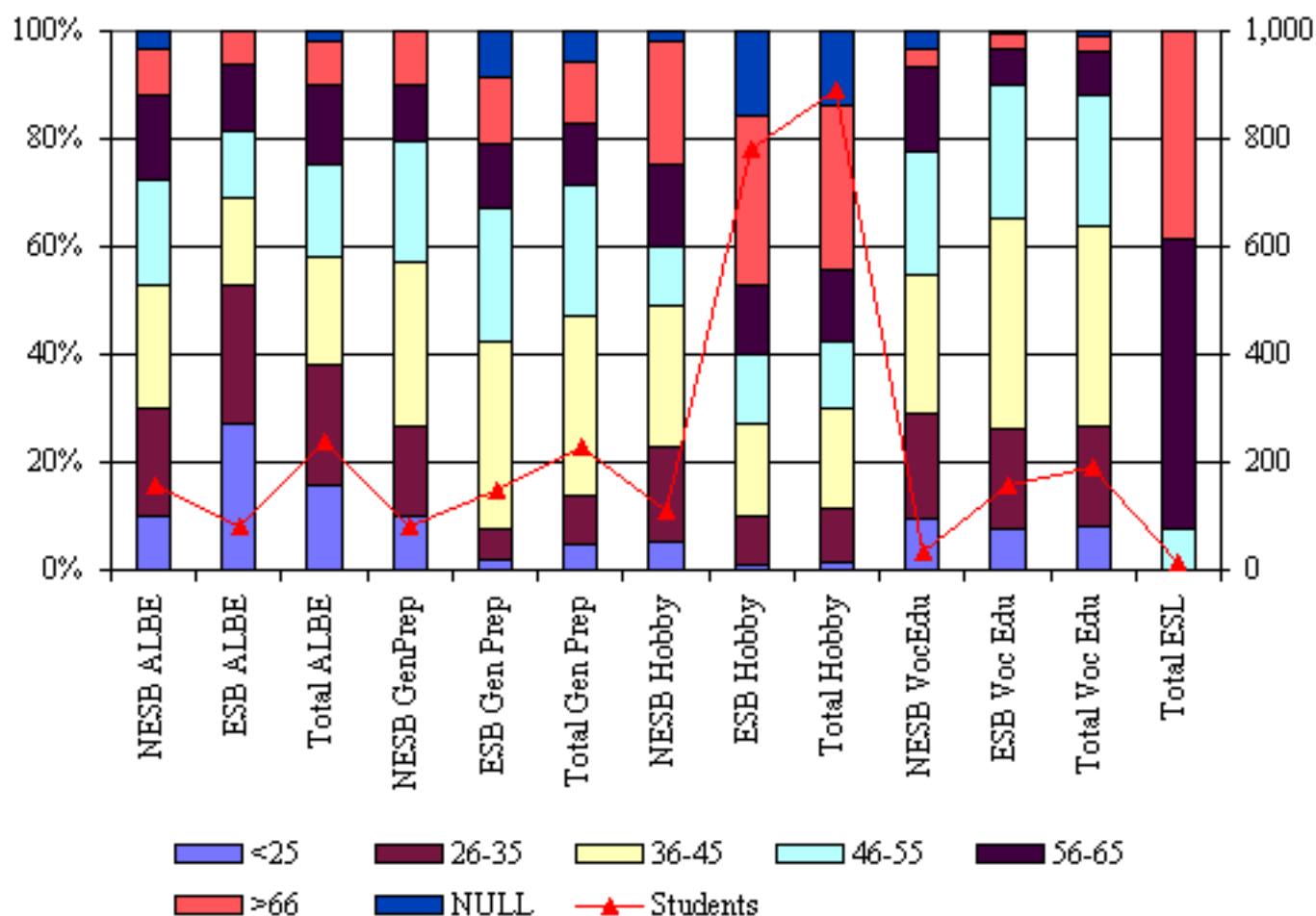


1.7 Nature of classes attended by age



	<25 yrs	26-35 yrs	36-45 yrs	46-55 yrs	56-65 yrs	>66 yrs	Null	Total
NESB ALBE	16	32	36	31	25	14	5	159
ESB ALBE	22	21	13	10	10	5	0	81
Total ALBE	38	53	49	41	35	19	5	240
NESB GenPrep	8	13	24	18	8	8	0	79
ESB Gen Prep	3	8	52	37	18	18	13	149
Total Gen Prep	11	21	76	55	26	26	13	228
NESB Hobby	6	19	29	12	17	25	2	110
ESB Hobby	8	71	134	101	101	245	122	782
Total Hobby	14	90	163	113	118	270	124	892
NESB VocEdu	3	6	8	7	5	1	1	31
ESB Voc Edu	12	30	62	39	11	4	1	159
Total Voc Edu	15	36	70	46	16	5	2	190
ESL Total	0	0	0	1	7	5	0	13
NESB	33	70	97	69	62	53	8	392
ESB	45	130	261	187	140	272	136	1171
Not Stated	5	11	7	7	0	0	5	35
All	83	211	365	263	202	325	149	1598

ABLE classes compared with 7% of ESB students. 20% of NESB students and 13% of ESB students took part in General Prep courses. This compares to regional averages of 16% NESB and 30% ESB. 67% of ESB students were enrolled in Hobby classes compared to 28% of students from a NESB. 3% of ACFE students from a NESB enrolled in ESL course compared to regional average of 28%. All (13) ESL students were aged over 46.