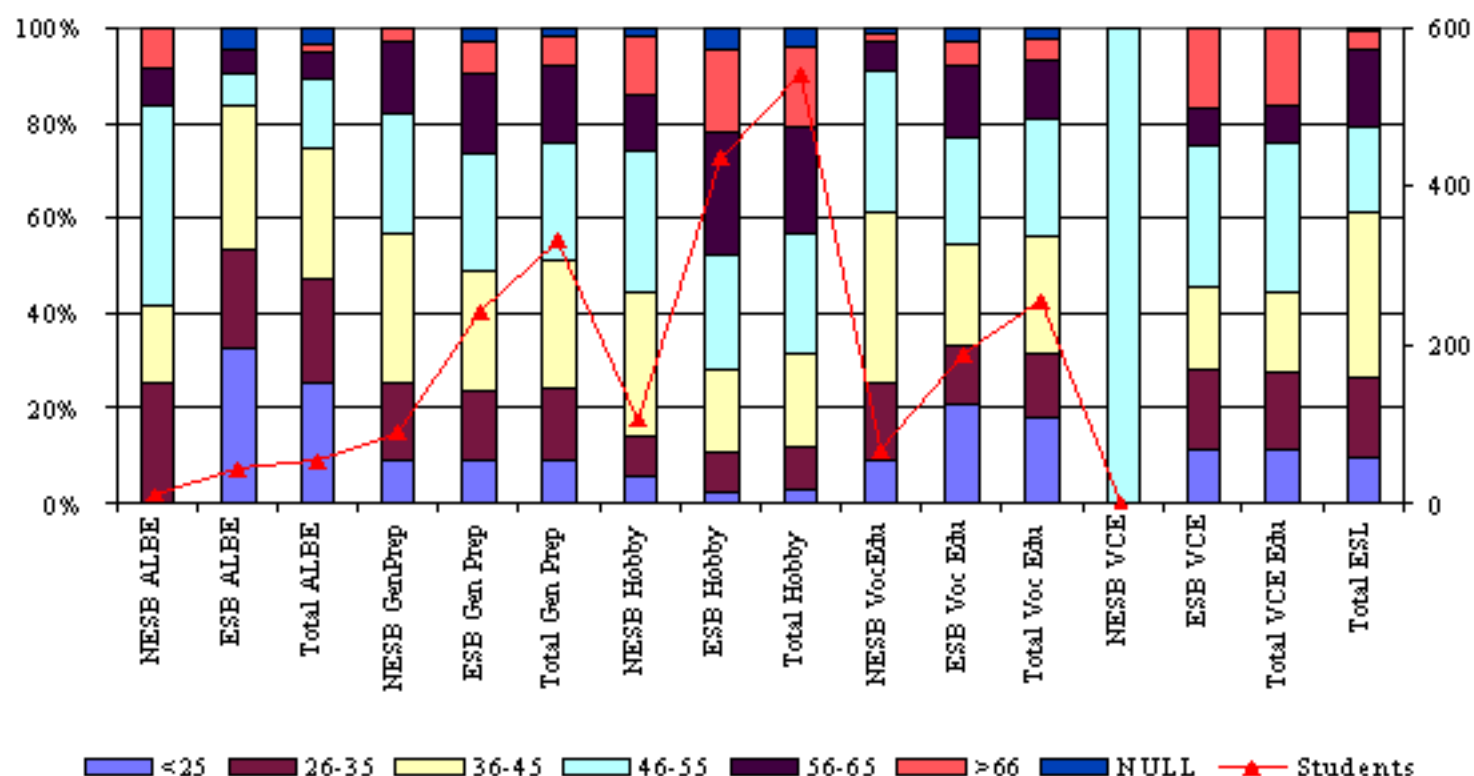


6.7 Nature of classes attended by age



ALBE - Adult Literacy and Basic

GenPrep - General Preparatory Courses e.g. introduction to computers

VocEdu - Vocational Education e.g. book keeping

Hobby Classes e.g. glass making

| | <25 yrs | 26-35 yrs | 36-45 yrs | 46-55 yrs | 56-65 yrs | >66 yrs | Null | Total |
|----------------|---------|-----------|-----------|-----------|-----------|---------|------|-------|
| NESB ALBE | 0 | 3 | 2 | 5 | 1 | 1 | 0 | 12 |
| ESB ALBE | 14 | 9 | 13 | 3 | 2 | 0 | 2 | 43 |
| Total ALBE | 14 | 12 | 15 | 8 | 3 | 1 | 2 | 55 |
| NESB GenPrep | 8 | 15 | 28 | 23 | 13 | 3 | 0 | 90 |
| ESB Gen Prep | 22 | 35 | 61 | 59 | 41 | 17 | 6 | 241 |
| Total Gen Prep | 30 | 50 | 89 | 82 | 54 | 20 | 6 | 331 |
| NESB Hobby | 6 | 9 | 31 | 31 | 12 | 13 | 2 | 104 |
| ESB Hobby | 10 | 37 | 77 | 104 | 112 | 77 | 20 | 437 |
| Total Hobby | 16 | 46 | 108 | 135 | 124 | 90 | 22 | 541 |
| NESB VocEdu | 6 | 11 | 24 | 20 | 4 | 1 | 1 | 67 |
| ESB Voc Edu | 40 | 23 | 40 | 43 | 28 | 10 | 5 | 189 |
| Total Voc Edu | 46 | 34 | 64 | 63 | 32 | 11 | 6 | 256 |
| NESB VCE | 0 | 0 | 0 | 1 | 0 | 0 | 0 | 1 |
| ESB VCE | 6 | 9 | 9 | 16 | 4 | 9 | 0 | 53 |
| Total VCE | 6 | 9 | 9 | 17 | 4 | 9 | 0 | 54 |
| ESL Total | 35 | 61 | 125 | 65 | 59 | 14 | 2 | 361 |
| NESB | 55 | 99 | 210 | 144 | 89 | 32 | 5 | 634 |
| ESB | 90 | 116 | 216 | 243 | 207 | 127 | 42 | 1041 |
| Not Stated | 66 | 250 | 496 | 478 | 231 | 130 | 195 | 1846 |
| All | 211 | 465 | 922 | 865 | 527 | 289 | 242 | 3521 |

2% of students from a NESB were enrolled in ALBE classes compared with 4% of ESB students. This compares to Regional averages of 20% NESB and 5% ESB. 14% of NESB students and 23% of ESB students took part in General Prep courses. 16% of NESB students were enrolled in Hobby classes compared to 41% of students from a ESB. 1 NESB student and 53 ESB students enrolled in VCE