

Settlement in the Eastern Region of Melbourne 2005/2006

Country of Birth:

Across the Eastern Region in 2005/06 there was an 11% decrease in new settlement compared to 2004/05 whilst across Victoria there was a 4% increase in 2005/06 compared to 2004/05.

The largest number of people settling were born in China (923) followed by India (464) and Malaysia (245).

Migration Stream

Under the skilled migration program the largest number were born in China (546), for the family program the largest number were also born in China (375) and for the humanitarian program the largest number were born in Sudan (77).

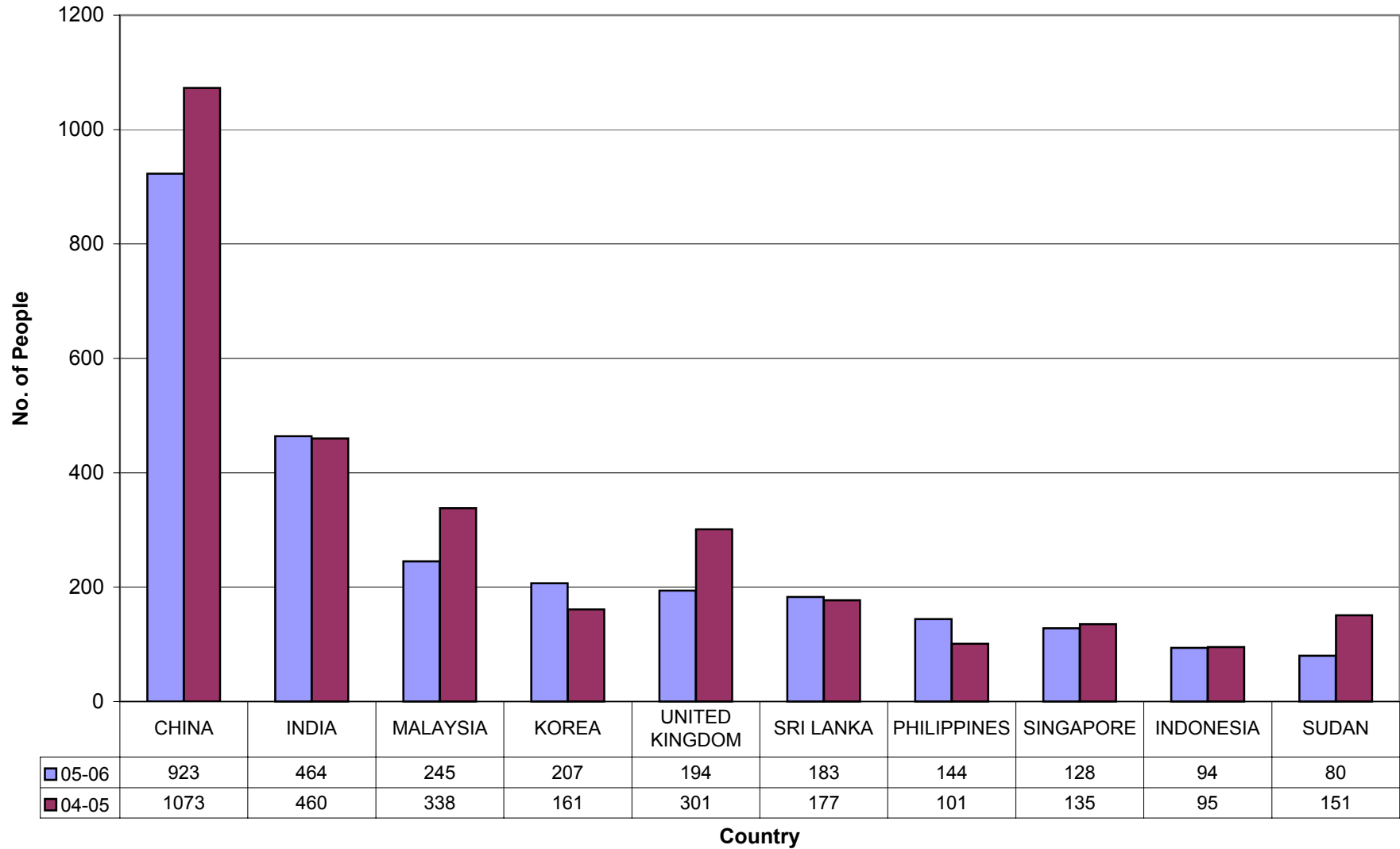
Across the Eastern Region 1633 (61% of the total) settled under the skilled migration program, 947 (36% of the total) under the family migration program and 82 (3% of the total) under the humanitarian program.

Children:

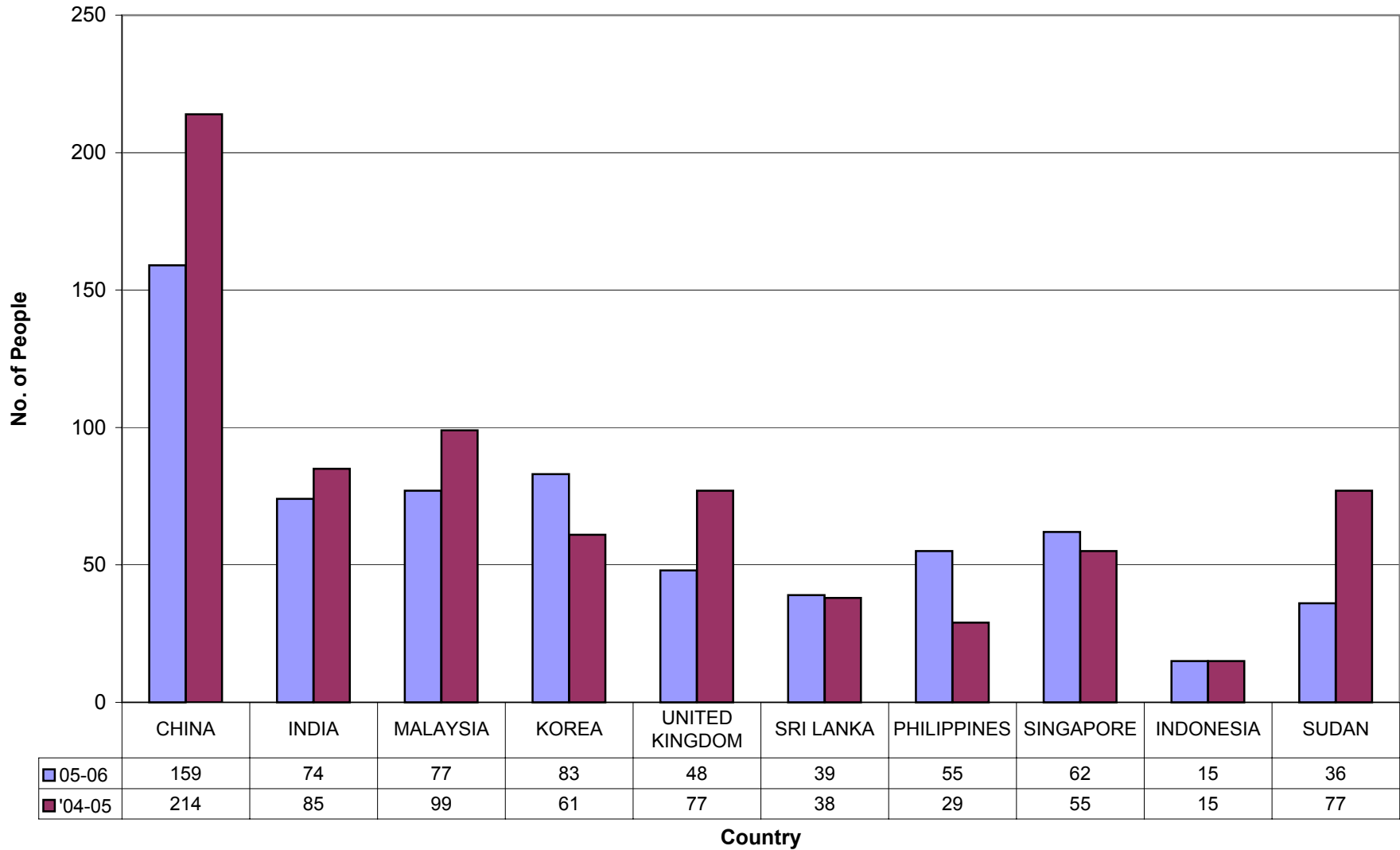
There were 648 children who settled in the Eastern Region from overseas in 2005/06, this represents a 14% decrease from 2004/05.

The largest number of children were born in China (159) followed by Korea (83) and Malaysia (77).

2005/06 and 2004/05 Country of Birth(Eastern Region)

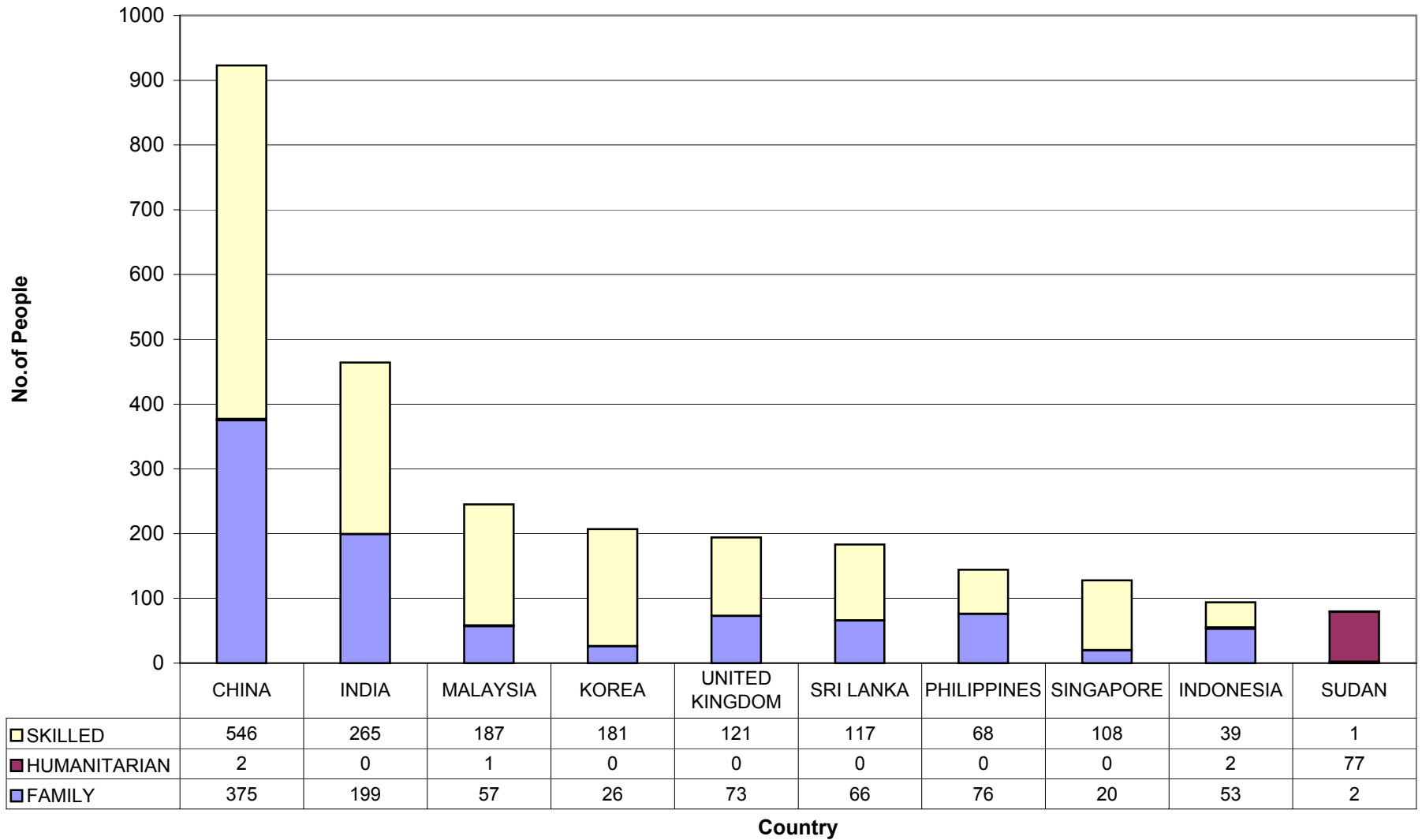


Number of children aged less than 18 years settling in 2005/06 and 2004/05(Eastern Region)

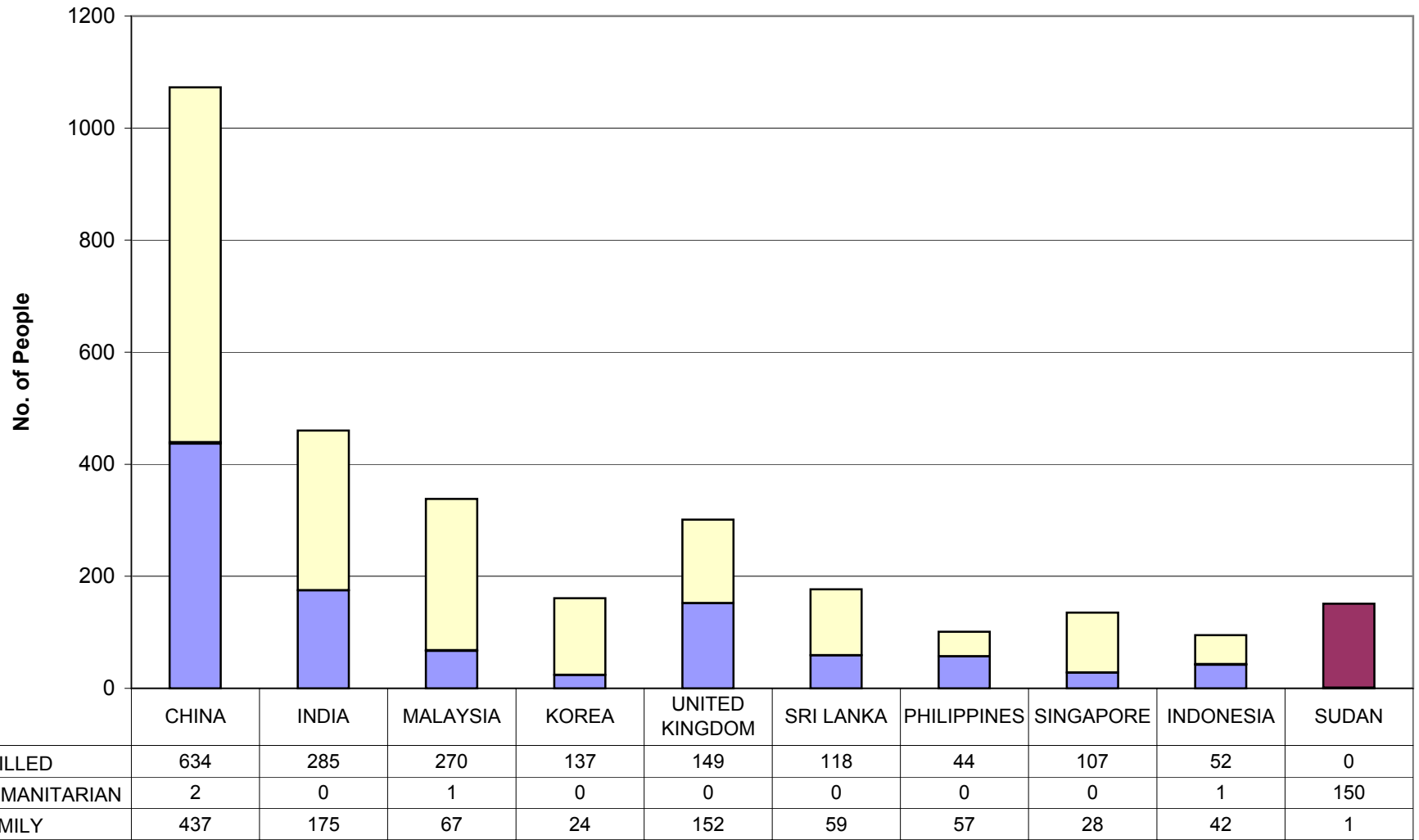


Source: DIMA Settlement Database August 2006

Settlement by migration stream 2005/06(Eastern Region)



Settlement by migration stream 2004/05(Eastern Region)



Country