

## **Settlement in the Monash 2005/2006**

### **Country of Birth:**

There were 841 people who settled in Monash in 2005/06 from overseas. This represents a 2% decrease from 2004/05. The largest number of people settling were born in China (317) followed by India (139) and Sri Lanka (94).

Across the Eastern Region in 2005/06 there was an 11% decrease in new settlement compared to 2004/05 whilst across Victoria there was a 4% increase in 2005/06 compared to 2004/05.

### **Migration Stream**

There were 528 people (62% of the total) who settled under the skilled migration program, 311 people (37% of the total) who settled under the family migration program and 2 people (1% of the total) under the humanitarian program.

China was the largest number in all of the migration programs. For the skilled program, there were 190 people, family program 125 people and the humanitarian program 2 people.

Across the Eastern Region 1633 (61% of the total) settled under the skilled migration program, 947 (36% of the total) under the family migration program and 82 (3% of the total) under the humanitarian program.

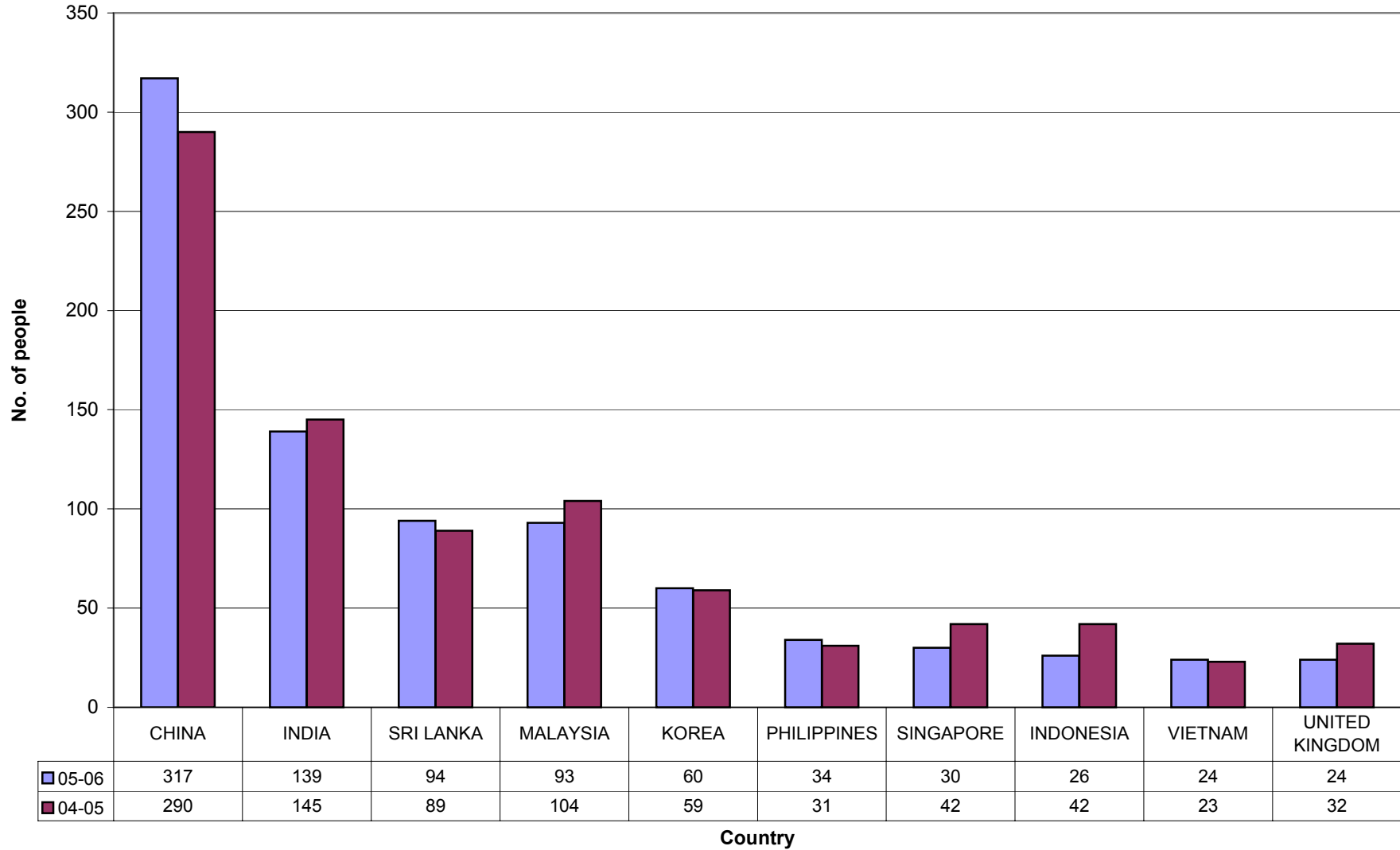
### **Children:**

There were 201 children who settled in the Monash from overseas in 2005/06, this represents a 2% increase from 2004/05.

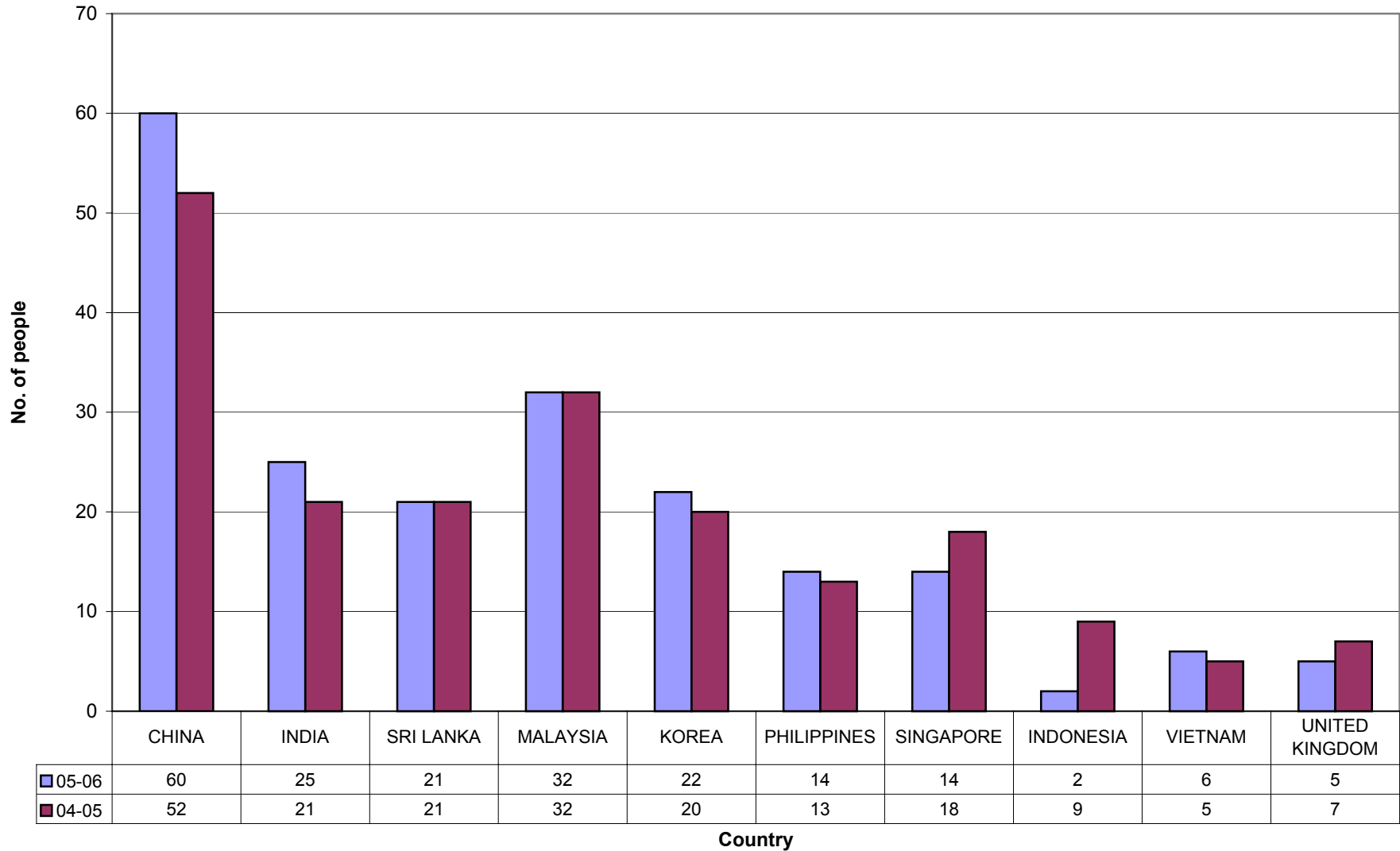
The largest number of children were born in China (60) followed by India (25) and Sri Lanka (21).

Across the Eastern Region, 648 children settled from overseas in 2005/06, this represents a 14% decrease from 2004/05.

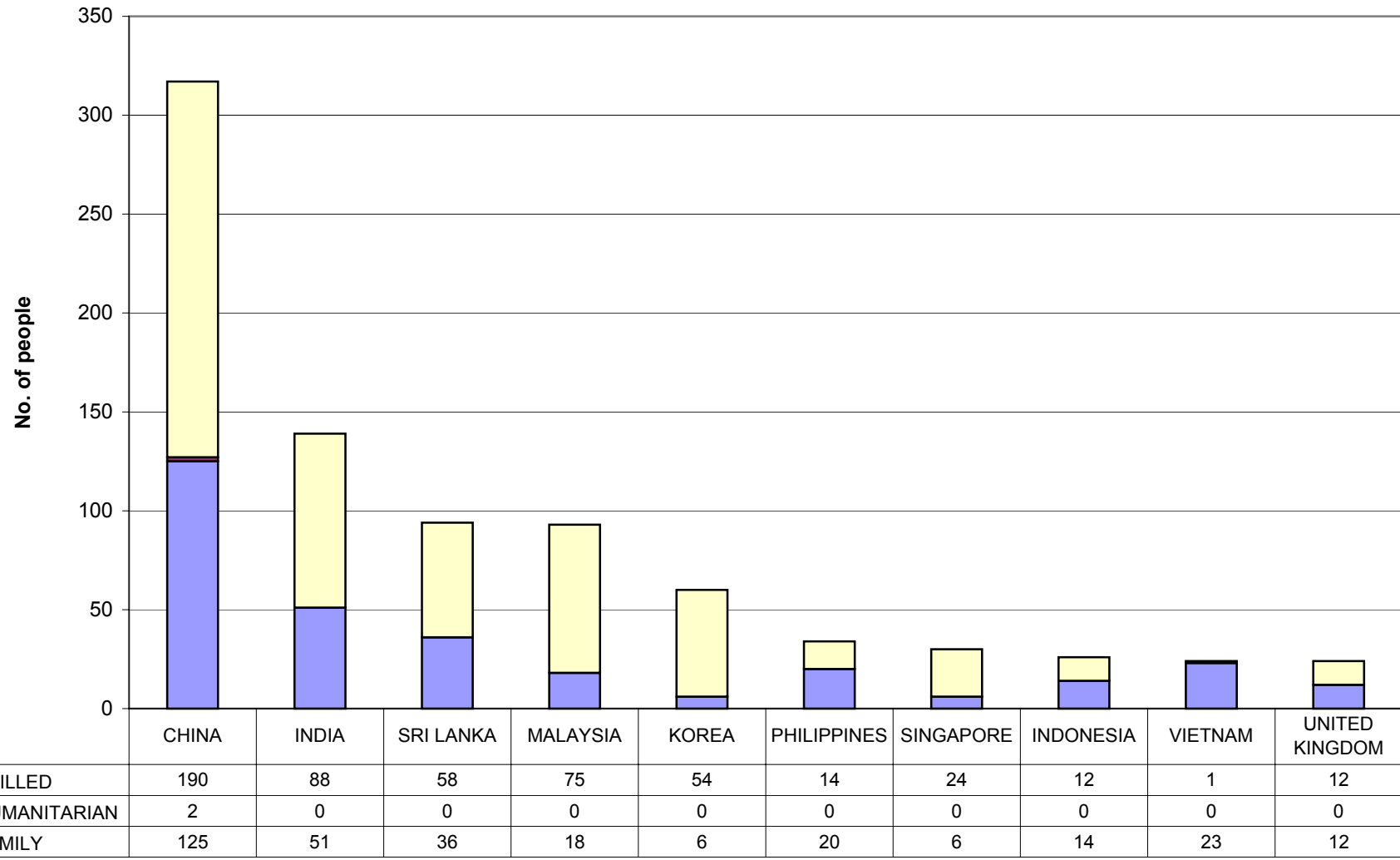
**2005/06 and 2004/05 Country of Birth(Monash)**



**Number of children aged less than 18 years settling in 2005/06 and 2004/05(Monash)**



### Settlement by migration stream 2005/06(Monash)



Country

### Settlement by migration stream 2004/05(monash)

